



AVANTHI INSTITUTE OF PHARMACEUTICAL SCIENCES

(Approved by A.I.C.T.E., P.C.I., New Delhi, Recognized by the Govt. of A.P. & Affiliated to JNTUGV-Vizianagaram)

Cherukupally (Village), Chittivalasa (SO), Bhogapuram (Mandal), Vizianagaram (Dist) -531162.

www.avanthipharma.ac.in, principal@avanthipharma.ac.in

7.1.2: The Institution has facilities and initiatives for:

1. Alternate sources of energy and energy conservation measures.
2. Management of the various types of degradable and non-degradable wastes .
3. Water conservation
4. Green campus initiatives
5. Disabled- friendly, barrier free environment

INDEX

5.Disabled- friendly, barrier free environment

S.No	Particulars	Page No
1	Creating an Inclusive Environment for People with Disabilities	2
2	Ramps for physically disabled	3-8
3	Divyangjan - Friendly washrooms	9-11
4	Assistive technology and facilities for persons with divyangjan accessible website, screen -reading software, mechanized equipment etc.	12-14
5	Provision for enquiry and information: Human assistance, reader scribe, scribe, software copies of reading materials, screen reading, etc.	15-18
6	Divyangjan policy document	19




PRINCIPAL

Avanathi Institute of Pharmaceutical Sciences
Cherukupally (V), Bhogapuram Mandal
Vizianagaram Dt., - 531162



AVANTHI INSTITUTE OF PHARMACEUTICAL SCIENCES

(Approved by A.I.C.T.E, P.C.I, New Delhi, Recognized by the Govt. of A.P. & Affiliated to JNTUGV-Vizianagaram)

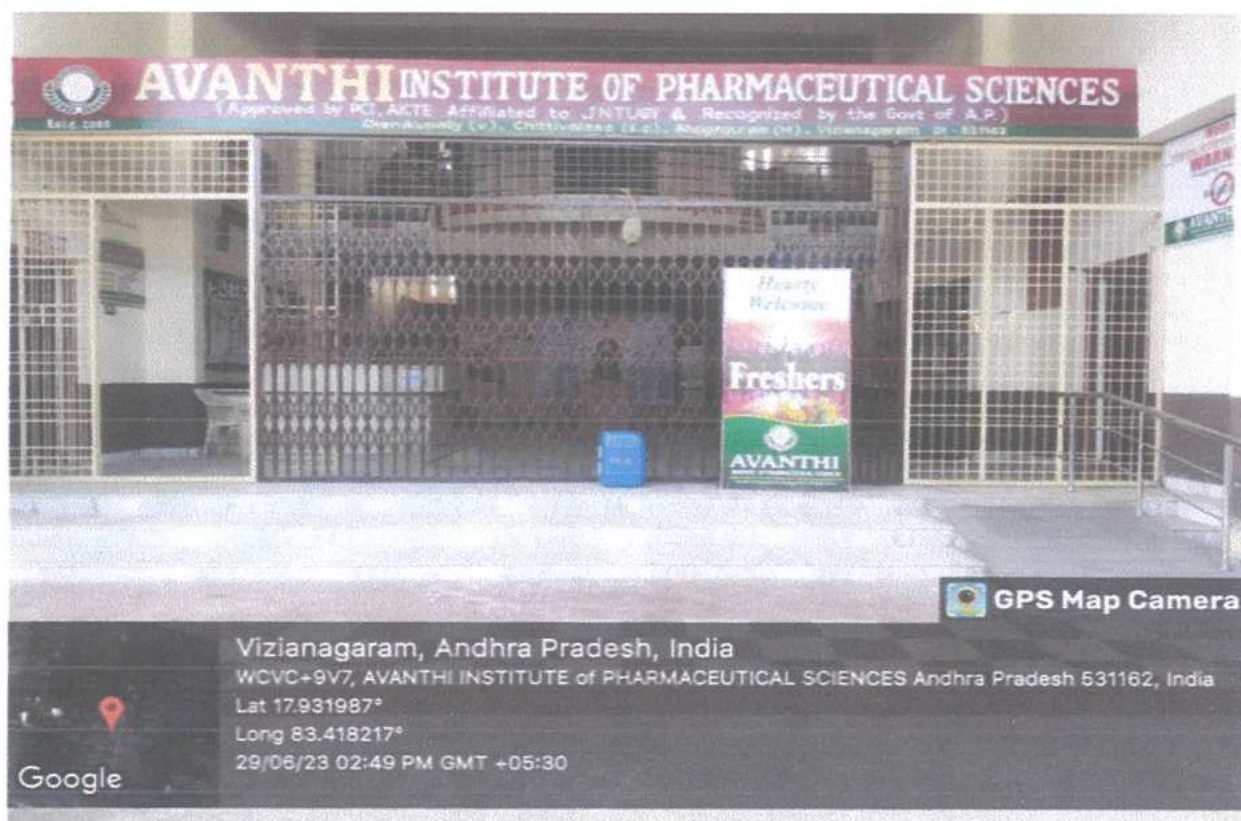
Cherukupally (Village), Chittivalasa (SO), Bhogapuram (Mandal), Vizianagaram (Dist) -531162.

www.avanthipharma.ac.in, principal@avanthipharma.ac.in

1. CREATING AN INCLUSIVE ENVIRONMENT FOR PEOPLE WITH DISABILITIES:

In our lives, we all encounter physical disabilities at some point. Whether it's a child, someone with a broken leg, a parent pushing a stroller, or an elderly person, we all face limitations in some way. Only a small number of individuals remain healthy and able-bodied throughout their lives. Therefore, it is crucial to ensure that our surroundings are accessible and accommodating to the needs of all individuals.

It is also essential to design various spaces such as classrooms, libraries, restrooms, cafeterias, and parking facilities in a way that promotes easy movement for everyone. Additionally, using technology to provide accessible learning formats is equally important for students with disabilities in universities and colleges. This document explores the available scientifically tested and appropriate technologies that can be used to create environments that are friendly to individuals with disabilities, both in terms of physical spaces and learning environments.



PRINCIPAL
Avanthi Institute of Pharmaceutical Sciences
Cherukupally (V), Bhogapuram Mandal
Vizianagaram Dt., - 531162



AVANTHI INSTITUTE OF PHARMACEUTICAL SCIENCES

(Approved by A.I.C.T.E., P.C.I., New Delhi, Recognized by the Govt. of A.P. & Affiliated to JNTUGV-Vizianagaram)
Cherukupally (Village), Chittivalasa (SO), Bhogapuram (Mandal), Vizianagaram (Dist) -531162.
www.avanthipharma.ac.in, principal@avanthipharma.ac.in

2. RAMPS FOR PHYSICALLY DISABLED:

The entrance for the pharmacy block at Avanathi Institute of Pharmaceutical Sciences that includes a gently sloping ramp, meeting accessibility standards to allow easy access for individuals with mobility challenges. Implemented clear and easily visible signs at Avanathi Institute of Pharmaceutical Sciences that direct individuals to the accessible entrance and indicate the presence of a ramp for those with disabilities. The ramp at Avanathi Institute of Pharmaceutical Sciences has a minimum width of 36 inches, providing ample space for wheelchairs and mobility aids to navigate comfortably. Non-Slip Surface Enhancing safety at Avanathi Institute of Pharmaceutical Sciences by using non-slip materials for the ramp surface, improving traction and reducing the risk of slips, especially during adverse weather conditions.

A designated waiting area near the entrance at Avanathi Institute of Pharmaceutical Sciences, providing a comfortable space for individuals who may need to rest or wait. The pharmacy counter at Avanathi Institute of Pharmaceutical Sciences is at an accessible height for wheelchair users, allowing individuals to approach and conduct transactions comfortably. Offering assistance services at Avanathi Institute of Pharmaceutical Sciences for individuals with disabilities, such as staff support or information, to create a more inclusive and accommodating environment. Regular audits will be conducted at Avanathi Institute of Pharmaceutical Sciences to identify and address any potential barriers, ensuring that the pharmacy block remains fully accessible.

Accessibility Standards: Ensure that ramps at chairs for disabled individuals on college premises comply with accessibility standards, including slope gradients, width, and handrail specifications. Following these standards ensures that the ramps are user-friendly and safe for individuals with mobility challenges.

Strategic Placement: Consider the strategic placement of ramps to provide convenient access to various areas within the college premises. Identify key locations such as entrances, common areas, and classrooms to install ramps, allowing disabled individuals to navigate the campus without encountering obstacles.

Regular Maintenance: Implement a proactive maintenance schedule for ramps to ensure they remain in optimal condition. Regular inspections and repairs are essential to address any wear and tear, preventing potential hazards and maintaining a supportive environment for disabled individuals attending the college.

Clear Signage: Use clear and visible signage indicating the location of Divyangjan-friendly washrooms, incorporating universally recognized symbols.

Spacious Layout: Design washroom spaces with ample floor space to accommodate wheelchairs or mobility aids, allowing easy navigation.



PRINCIPAL

Avanathi Institute of Pharmaceutical Sciences
Cherukupally (V), Bhogapuram Mandal
Vizianagaram Dt., - 531162



AVANTHI INSTITUTE OF PHARMACEUTICAL SCIENCES

(Approved by A.I.C.T.E., P.C.I., New Delhi, Recognized by the Govt. of A.P. & Affiliated to JNTUGV-Vizianagaram)

Cherukupally (Village), Chittivalasa (SO), Bhogapuram (Mandal), Vizianagaram (Dist) -531162.

www.avanthipharma.ac.in, principal@avanthipharma.ac.in

Accessible Fixtures: Set up fixtures such as sinks, mirrors, and soap dispensers at heights that cater to individuals using wheelchairs or other mobility aids.

Accessible Entrance: It is crucial to have an entrance that is accessible, with ramps or lifts to accommodate individuals with different mobility needs.

Assistance Services: Train staff to offer assistance when needed and create a welcoming environment for individuals with diverse abilities.

Privacy Features: Ensure Divyangjan-friendly washrooms provide adequate privacy features, addressing the needs of individuals with various disabilities. Creating Divyangjan-friendly washrooms in the pharmacy department involves thoughtful design and consideration of various needs to ensure inclusivity for all individuals, regardless of their abilities.



PRINCIPAL

Avanthi Institute of Pharmaceutical Sciences
Cherukupally (V), Bhogapuram Mandal
Vizianagaram Dt., - 531162



AVANTHI INSTITUTE OF PHARMACEUTICAL SCIENCES

(Approved by A.I.C.T.E., P.C.I., New Delhi, Recognized by the Govt. of A.P. & Affiliated to JNTUGV-Vizianagaram)

Cherukupally (Village), Chittivalasa (SO), Bhogapuram (Mandal), Vizianagaram (Dist) -531162.

www.avanthipharma.ac.in, principal@avanthipharma.ac.in



Pharmacy block has strategically placed ramps at the entrance gate to make it easier for individuals with disabilities to move around



PRINCIPAL

Avanthi Institute of Pharmaceutical Sciences
Cherukupally (V), Bhogapuram Mandal
Vizianagaram Dt., - 531162

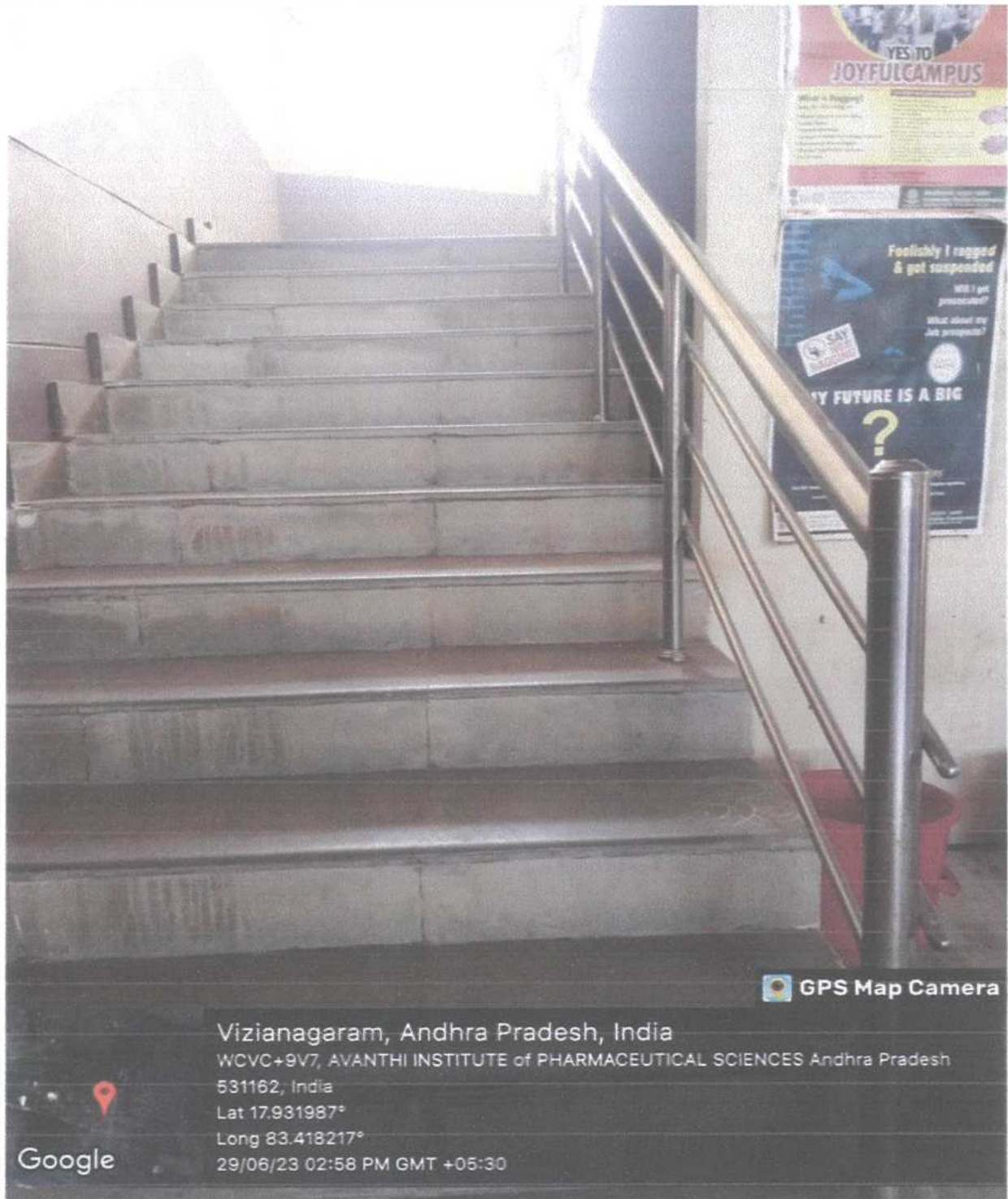


AVANTHI INSTITUTE OF PHARMACEUTICAL SCIENCES

(Approved by A.I.C.T.E., P.C.I., New Delhi, Recognized by the Govt. of A.P. & Affiliated to JNTUGV-Vizianagaram)

Cherukupally (Village), Chittivalasa (SO), Bhogapuram (Mandal), Vizianagaram (Dist) -531162.

www.avanthipharma.ac.in, principal@avanthipharma.ac.in



Vizianagaram, Andhra Pradesh, India

WCVC+9V7, AVANTHI INSTITUTE of PHARMACEUTICAL SCIENCES Andhra Pradesh

531162, India

Lat 17.931987°

Long 83.418217°

29/06/23 02:58 PM GMT +05:30

GPS Map Camera

Ramps have been carefully installed on the ground floor to ensure convenient access for disabled individuals



PRINCIPAL

Avanthi Institute of Pharmaceutical Sciences
Cherukupally (V), Bhogapuram Mandal
Vizianagaram Dt., - 531162



AVANTHI INSTITUTE OF PHARMACEUTICAL SCIENCES

(Approved by A.I.C.T.E., P.C.I., New Delhi, Recognized by the Govt. of A.P. & Affiliated to JNTUGV-Vizianagaram)

Cherukupally (Village), Chittivalasa (SO), Bhogapuram (Mandal), Vizianagaram (Dist) -531162.

www.avanthipharma.ac.in, principal@avanthipharma.ac.in



First floor of AIPS campus has been equipped with well-placed ramps to provide easy accessibility for people with disabilities




PRINCIPAL

Avanthi Institute of Pharmaceutical Sciences
Cherukupally (V), Bhogapuram Mandal
Vizianagaram Dt., - 531162



AVANTHI INSTITUTE OF PHARMACEUTICAL SCIENCES

(Approved by A.I.C.T.E., P.C.I., New Delhi, Recognized by the Govt. of A.P. & Affiliated to JNTUGV-Vizianagaram)

Cherukupally (Village), Chittivalasa (SO), Bhogapuram (Mandal), Vizianagaram (Dist) -531162.

www.avanthipharma.ac.in, principal@avanthipharma.ac.in



GPS Map Camera

Vizianagaram, Andhra Pradesh, India

WCVC+9V7, AVANTHI INSTITUTE of PHARMACEUTICAL SCIENCES Andhra Pradesh

531162, India

Lat 17.931987°

Long 83.418217°

29/06/23 03:02 PM GMT +05:30

Google

Second floor of AIPS campus equipped with ramps for easy accessibility

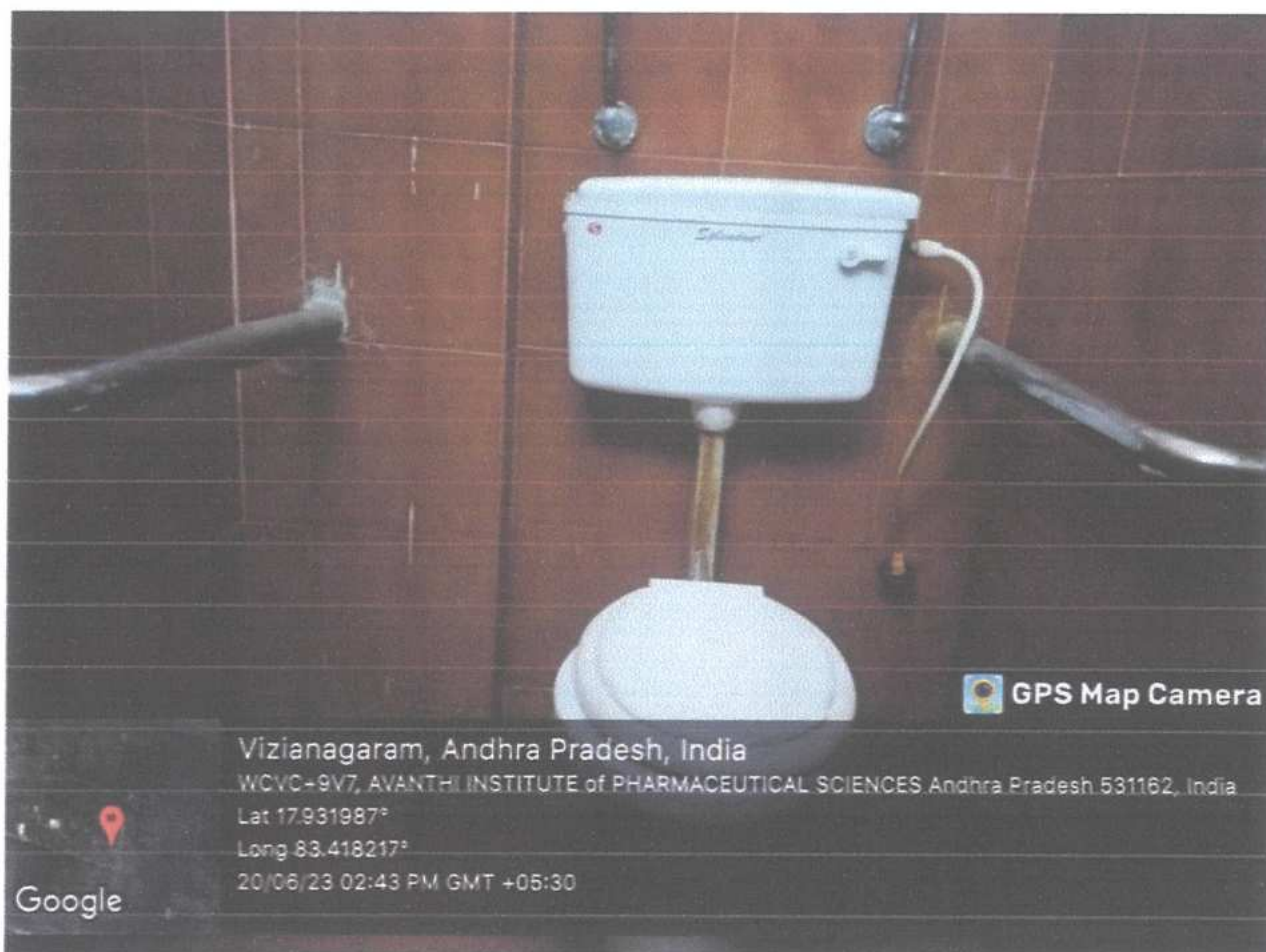



PRINCIPAL

Avanthi Institute of Pharmaceutical Sciences
Cherukupally (V), Bhogapuram Mandal
Vizianagaram Dt., - 531162

3. Divyangjan - Friendly washrooms:

Avanthi Institute of Pharmaceutical Sciences recognizes the specific needs of individuals with mobility challenges. Which include adapted toilets with features like raised seats and proper space, ensuring accessibility and convenience for all individuals.



Washroom at AIPS campus has been designed with the needs of disabled individuals in mind, promoting inclusivity and making it accessible for everyone



PRINCIPAL

Avanthi Institute of Pharmaceutical Sciences
Cherukupally (V), Bhogapuram Mandal
Vizianagaram Dt., - 531162

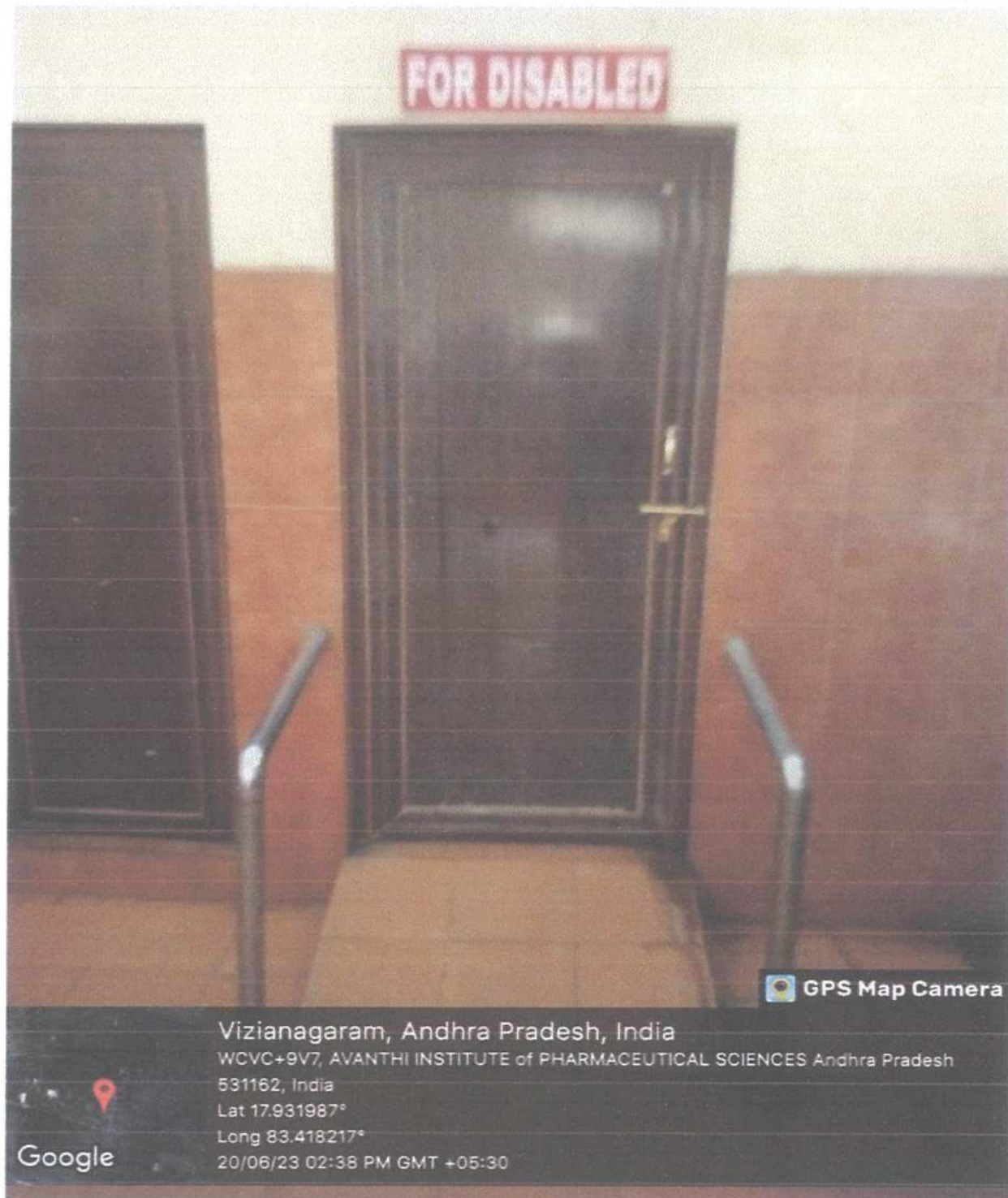


AVANTHI INSTITUTE OF PHARMACEUTICAL SCIENCES

(Approved by A.I.C.T.E, P.C.I, New Delhi, Recognized by the Govt. of A.P. & Affiliated to JNTUGV-Vizianagaram)

Cherukupally (Village), Chittivalasa (SO), Bhogapuram (Mandal), Vizianagaram (Dist) -531162.

www.avanthipharma.ac.in, principal@avanthipharma.ac.in



Washroom at AIPS campus specifically designed for individuals with disabilities



PRINCIPAL

Avanthi Institute of Pharmaceutical Sciences
Cherukupally (V), Bhogapuram Mandal
Vizianagaram Dt., - 531162



A disabled-friendly washroom available at AIPS campus



PRINCIPAL

Avanthi Institute of Pharmaceutical Sciences
Cherukupally (V), Bhogapuram Mandal
Vizianagaram Dt., - 531162



AVANTHI INSTITUTE OF PHARMACEUTICAL SCIENCES

(Approved by A.I.C.T.E., P.C.I., New Delhi, Recognized by the Govt. of A.P. & Affiliated to JNTUGV-Vizianagaram)

Cherukupally (Village), Chittivalasa (SO), Bhogapuram (Mandal), Vizianagaram (Dist) -531162.

www.avanthipharma.ac.in, principal@avanthipharma.ac.in

4. Assistive technology and facilities for persons with divyangjan accessible website ,screen -reading software, mechanized equipment etc.

Incorporate screen reading software into the Avanathi institute of pharmaceutical sciences website to aid individuals with visual impairments by converting text content into synthesized speech.

1. Alternative Text (Alt Text)

Ensure the inclusion of descriptive alt text for images at Avanathi institute of pharmaceutical sciences, offering context to users who depend on screen readers and guaranteeing accessibility for individuals with visual disabilities.

2. Keyboard Navigation :

Enable keyboard navigation on the Avanathi institute of pharmaceutical sciences website, enabling individuals with mobility challenges to browse without the need for a traditional mouse.

3. Contrast and Color Choices :

Select high contrast options and carefully consider color choices at Avanathi institute of pharmaceutical sciences to improve visibility for users with visual impairments or color blindness.

4. Captioning for Multimedia :

Offer captions or transcripts for multimedia content at Avanathi institute of pharmaceutical sciences, providing support for individuals with hearing impairments or those who prefer text-based content.

5. Mechanized Equipment's :

Enhance accessibility for individuals with mobility challenges at Avanathi institute of pharmaceutical sciences by equipping the physical facility with mechanized aids like automatic doors, elevators, and lifts.

6. Braille Signage :

Integrate Braille signage throughout the Avanathi institute of pharmaceutical sciences facility, including restrooms, entrances, and key navigation points, to cater to individuals with visual impairments.

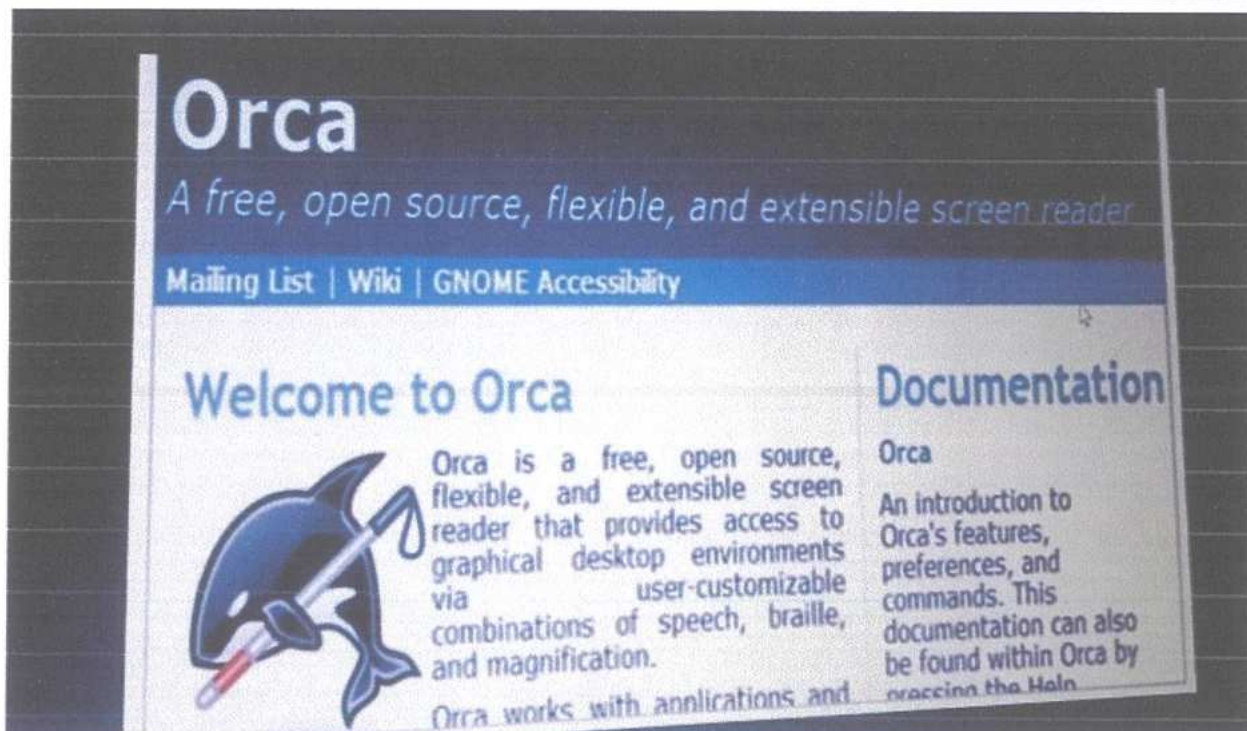
7. Assistive Listening Devices:

Enhance auditory accessibility for individuals with hearing impairments at Avanathi institute of pharmaceutical sciences by installing assistive listening devices like hearing loops.

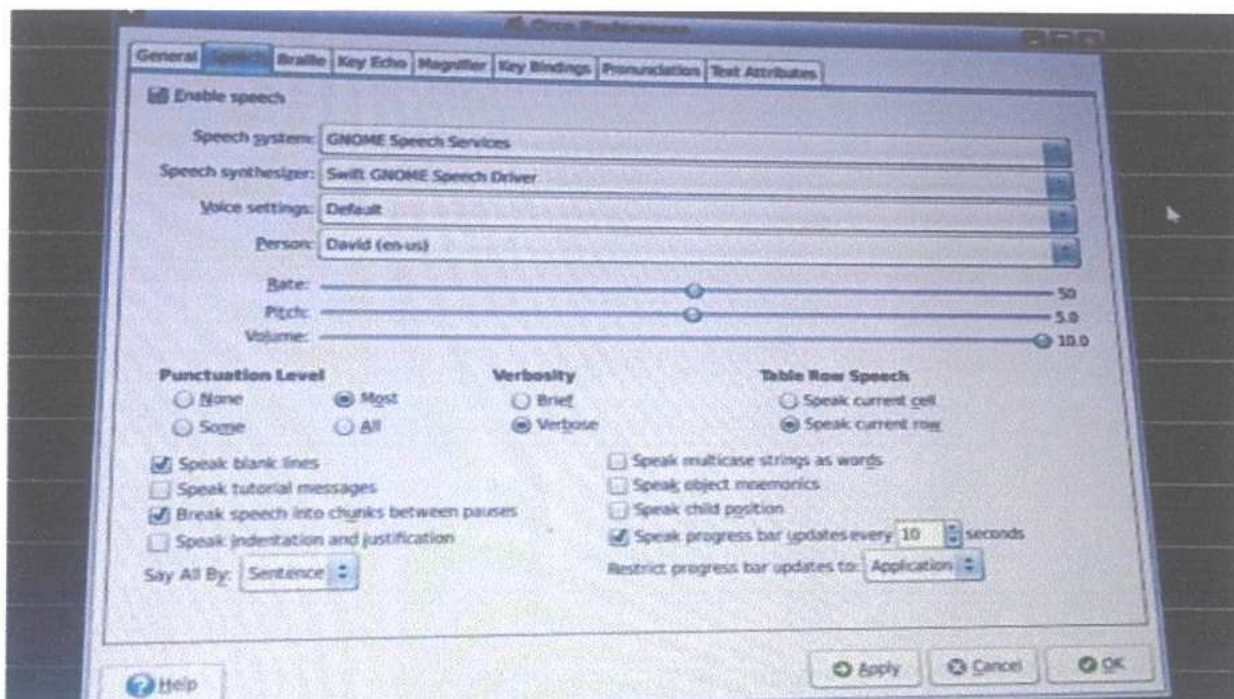


PRINCIPAL

Avanathi Institute of Pharmaceutical Sciences
Cherukupally (V), Bhogapuram Mandal
Vizianagaram Dt., - 531162



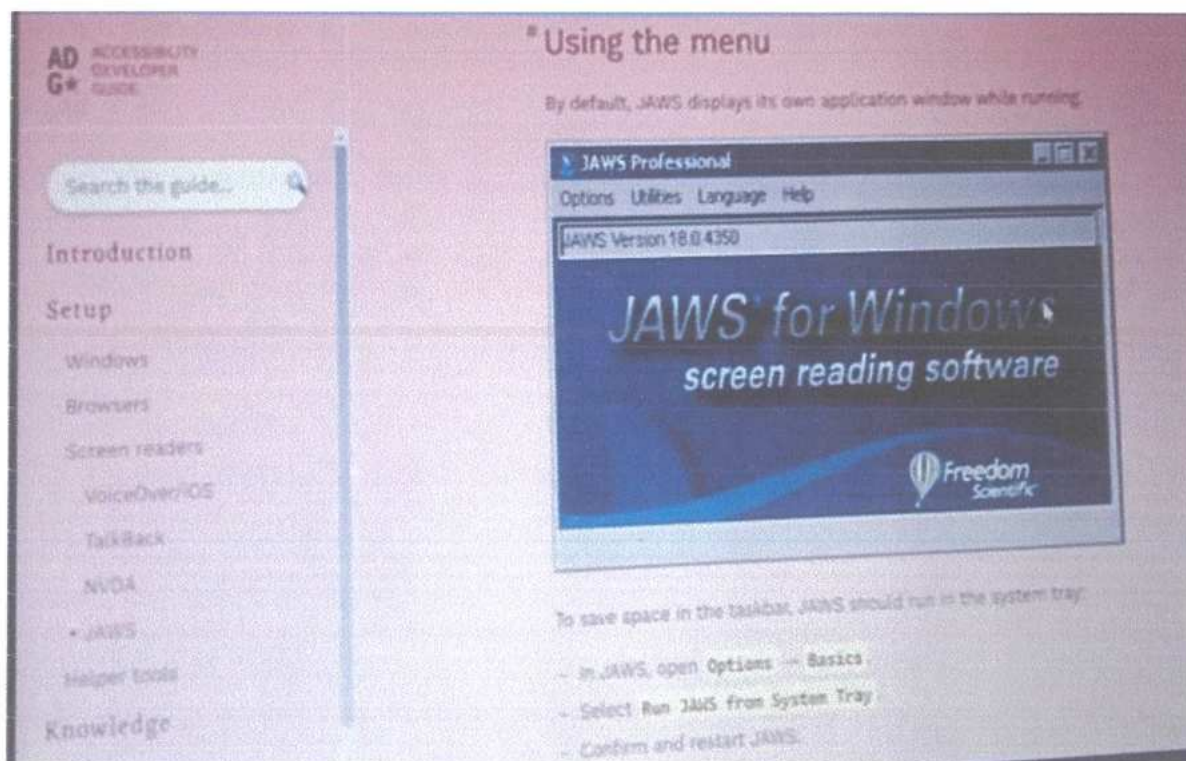
Non-visual desktop access software installed at AIPS campus allows individuals with visual impairments to effectively navigate and use computers



Non-visual desktop access feature for disabled students at AIPS campus



PRINCIPAL
 Avanthi Institute of Pharmaceutical Sciences
 Cherukupally (V), Bhogapuram Mandal
 Vizianagaram Dt., - 531162



The auditory and non-visual desktop access available at AIPS campus



PRINCIPAL

Avanthi Institute of Pharmaceutical Sciences
Cherukupally (V), Bhogapuram Mandal
Vizianagaram Dt., - 531162



AVANTHI INSTITUTE OF PHARMACEUTICAL SCIENCES

(Approved by A.I.C.T.E., P.C.I., New Delhi, Recognized by the Govt. of A.P. & Affiliated to JNTUGV-Vizianagaram)

Cherukupally (Village), Chittivalasa (SO), Bhogapuram (Mandal), Vizianagaram (Dist) -531162.

www.avanthipharma.ac.in, principal@avanthipharma.ac.in

5. Provisions for enquiry and information ,Human assistance reader,Scribe,soft copies and Reading material, screen reading

Introduction:

A physically disabled candidate who is unable to write their semester and examination can receive assistance from another person known as a scribe. The appointment of a scribe must be approved by the Chief Examiner (CE) of the college and is reserved for genuinely disabled candidates who are unable to write the examination themselves. The following guidelines must be strictly followed when appointing a scribe.

Guidelines:

- (a) A scribe can be appointed for candidates who are blind or disabled and unable to write the examination themselves.
- (b) Candidates who require the assistance of a scribe must submit an application to the CE through the Head of the Department (HOD), with a recommendation from the proctor. The application must be accompanied by the following documents:
 - (i) Medical Certificate: A certificate from a government district hospital, higher-grade hospital, or a registered medical practitioner, attested by the HOD, demonstrating the candidate's inability to write the examination themselves.
 - (ii) No Relation Certificate: A statement from both the student and the scribe confirming that there is no relation between them. This statement must be authenticated by a Notary Public.
 - (iii) Attested copies of the scribe's testimonials.
 - (iv) Handwritten matter: A handwritten sample on an A4 size paper, written by the scribe.
 - (v) Passport size photos: Three recent passport size photos of the scribe, attested by the HOD.
- (c) The appointed scribe must have a lower level of education than the candidate and should not be studying in the same field (Engineering/Architecture).
- (d) The Chief Superintendent will arrange a suitable room for the candidate and the scribe and appoint a room superintendent for the candidate, who will be changed daily.
- (e) If a temporarily disabled candidate requests to write the examination themselves with extra time (60 minutes for a 3-hour examination, i.e., 20 minutes per hour), they must submit an application to the Principal of the college through the Controller.

Counselling cell is functioning with a full time psychological Counselor for emotional well being of the needy students

Certainly! In the pharmacy block of Avanthi Institute of Pharmaceutical Sciences, it is imperative to establish dedicated help desks where knowledgeable staff members are readily accessible to provide



PRINCIPAL

Avanthi Institute of Pharmaceutical Sciences
Cherukupally (V), Bhogapuram Mandal
Vizianagaram Dt., - 531162



AVANTHI INSTITUTE OF PHARMACEUTICAL SCIENCES

(Approved by A.I.C.T.E., P.C.I., New Delhi, Recognized by the Govt. of A.P. & Affiliated to JNTUGV-Vizianagaram)

Cherukupally (Village), Chittivalasa (SO), Bhogapuram (Mandal), Vizianagaram (Dist) -531162.

www.avanthipharma.ac.in, principal@avanthipharma.ac.in

personalized assistance for any inquiries. Furthermore, students in need of support with reading or note-taking should be offered the assistance of readers and scribes. It is also crucial to ensure the availability of electronic versions of reading materials, thereby promoting the use of electronic devices. Moreover, the integration of screen reading technologies will greatly facilitate visually impaired students in effortlessly accessing information. By implementing this comprehensive approach, Avanthi Institute of Pharmaceutical Sciences guarantees an inclusive atmosphere for all students.

Informational Signage: Include informational signs that convey important details such as operating hours, emergency contact numbers, and any specific instructions for visitors. This helps individuals seeking pharmaceutical services to obtain relevant information easily.

Evaluation and Monitoring :

Avanthi Institute of Pharmaceutical Sciences should establish a system for evaluating and monitoring the effectiveness of scribe services, ensuring that they are meeting the needs of students and making necessary adjustments as required.

Collaboration with Disability Support Services :

Avanthi Institute of Pharmaceutical Sciences should emphasize the importance of collaboration between scribe services and disability support services to ensure a holistic and comprehensive approach to supporting students with disabilities.

Awareness and Promotion:

Avanthi Institute of Pharmaceutical Sciences should develop strategies to raise awareness about the availability and benefits of scribe services, promoting inclusivity and encouraging students with disabilities to utilize this support.

Continuous Professional Development:

Avanthi Institute of Pharmaceutical Sciences should provide opportunities for ongoing professional development for scribes, ensuring they stay updated on best practices and new developments in supporting students with disabilities.

Legal and Ethical Considerations:

Avanthi Institute of Pharmaceutical Sciences should highlight the legal and ethical considerations surrounding the provision of scribe services, ensuring compliance with relevant laws and regulations and promoting ethical practices.

Resource Allocation :

Avanthi Institute of Pharmaceutical Sciences should allocate appropriate resources, including funding and staffing, to ensure the effective implementation and sustainability of scribe services in



PRINCIPAL

Avanthi Institute of Pharmaceutical Sciences

Cherukupally (V), Bhogapuram Mandal

Vizianagaram Dt., - 531162

Avanthi Institute of Pharmaceutical Sciences



AVANTHI INSTITUTE OF PHARMACEUTICAL SCIENCES

(Approved by A.I.C.T.E., P.C.I., New Delhi, Recognized by the Govt. of A.P. & Affiliated to JNTUGV-Vizianagaram)

Cherukupally (Village), Chittivalasa (SO), Bhogapuram (Mandal), Vizianagaram (Dist) -531162.

www.avanthipharma.ac.in, principal@avanthipharma.ac.in

academic settings.

Review and Revision :

Avanthi Institute of Pharmaceutical Sciences should establish a regular review and revision process for the annexure, ensuring that it remains up-to-date and aligned with evolving needs and best practices in supporting students with disabilities.



Special counseling sessions have been arranged specifically for disabled students, offering them the necessary support and guidance at AIPS campus




PRINCIPAL

Avanthi Institute of Pharmaceutical Sciences
Cherukupally (V), Bhogapuram Mandal
Vizianagaram Dt., - 531162



AVANTHI INSTITUTE OF PHARMACEUTICAL SCIENCES

(Approved by A.I.C.T.E, P.C.I, New Delhi, Recognized by the Govt. of A.P. & Affiliated to JNTUGV-Vizianagaram)
Cherukupally (Village), Chittivalasa (SO), Bhogapuram (Mandal), Vizianagaram (Dist) -531162.
www.avanthipharma.ac.in, principal@avanthipharma.ac.in



First aid rooms and health checkup facilities are available at AIPS campus to meet the needs of individuals with physical disabilities, ensuring their well-being and providing care



[Signature]
PRINCIPAL

Avanthi Institute of Pharmaceutical Sciences
Cherukupally (V), Bhogapuram Mandal
Vizianagaram Dt., - 531162



AVANTHI INSTITUTE OF PHARMACEUTICAL SCIENCES

(APPROVED BY A.I.C.T.E, P.C.I, New Delhi, Recognized BY THE GOVT. OF A.P. & AFFILIATED TO JNTUK-KAKINADA)
Cherukupally (Village), Chittivalasa (SO), Bhogapuram (Mandal), Vizianagaram (Dist) -531162.
www.avanthipharma.ac.in, principal@avanthipharma.ac.in

DIVYANJAN POLICY AND INITIATIVES UNDERTAKEN

Dt: 05-09-2018

The purpose of this policy document is to present a comprehensive strategy and commitment towards inclusivity accessibility and support for individuals with disabilities known as divyangjan. It aims to ensure equal opportunities, discrimination and full participation for individuals with diverse abilities in all aspects of life.

Policy Objectives:

1. The main goal of this policy is to promote an inclusive culture that prevents discrimination, exploitation, and exclusion of disabled students and staff in all aspects of work and education
2. Another objective is to establish an effective regulatory mechanism that ensures the delivery of service to disabled students and staff within the institution.
3. Additionally, this policy aims to ensure compliance with legislation related to persons with disabilities

Admission Policy for individuals with disabilities:

1. Following the guidelines provided by AIPS /University all reserved seats for individual with disabilities in all programs will be filled.
2. The institution is committed to providing all Facilities, recommend by AIPS/ University to individuals with disabilities

Exam Policy:

1. The institute will make necessary arrangements to unable students with disabilities to actively participate in examinations.
2. The examination procedure will adhere to the guidelines issued by JNTUK Kakinada provisions for extra time and the allocation of scribes.

Facilities and Initiatives Undertaken:

The Institute has implemented various infrastructure facilities to support individuals with disabilities such as ramps, wheelchairs, blind sticks, scribes for examination and disabled friendly washroom. Additionally there is an inbuilt software system in MS office called "Read to text and text to Read specifically designed for certain individuals with disabilities. special training is also provided to students who require it. Currently there are no students with disabilities on campus. However, if any are admitted in the future; the institute will ensure the provision of necessary facilities.

The Divyangjan policy was adapted on september 5th 2018, at Avanathi Institute of pharmaceutical sciences, Tagarapuvalasa.

PRINCIPAL

Avanathi Institute of Pharmaceutical Sciences
Cherukupally (V), Bhogapuram Mandal
Vizianagaram Dt., - 531162



Principal

PRINCIPAL

Avanathi Institute of Pharmaceutical Sciences
Cherukupally (V), Bhogapuram Mandal
Vizianagaram Dt., - 531162



Avanathi Institute of Pharmaceutical Sciences